



225ft Self-Propelled Jack-Up Barge

“MOSCO 1”

Main Particulars

Year, place built	2015 , Weihai – China
Class , notation	ABS, A1, Self-Elevating Unit, AMS-NP, CPS
Flag	Panama
Length Overall LOA	66.90 m
Length Molded	43.80 m
Breadth Molded B	39.00 m
Depth Molded D	5.20 m
Design Draft T	3.20 m
Deck Area	450 m ²
Maximum Variable Load	500 Tons
Deck Load	5 Tons/m ²
Accommodation	123 persons

Machinery

Main Engines	960 kw x 2
Bow Thruster	450 kw , Thrust 65 kn
Generators	350 kw x 3 (400 V , 50 hz)
Emergency Generator	200 kw x 1 (400 V , 50 hz)
Speed	≥ 4.0 Knots
Main Crane	50 tons @ 8 m / 20 tons @ 28 m
Auxiliary Crane	3 tons @ 28 m

Tank Capacities

Ballast tank	1950 m ³
Fuel oil tank	163 m ³
Freshwater tank	308 m ³
Seawater reservoir tank	110 m ³

Helideck

Bell 212 or 412

Jacking Particulars

Number of Legs, Configuration	3 , Column
Leg Length (including spud can)	67.056 m (220 ft)
Maximum Water Depth	45 m
Lifting Capacity (each leg)	1000 tons
Jacking System	Hydraulic ram and pin type
Jacking Speed	12 m/h (39.37 ft/h)

Environmental Conditions

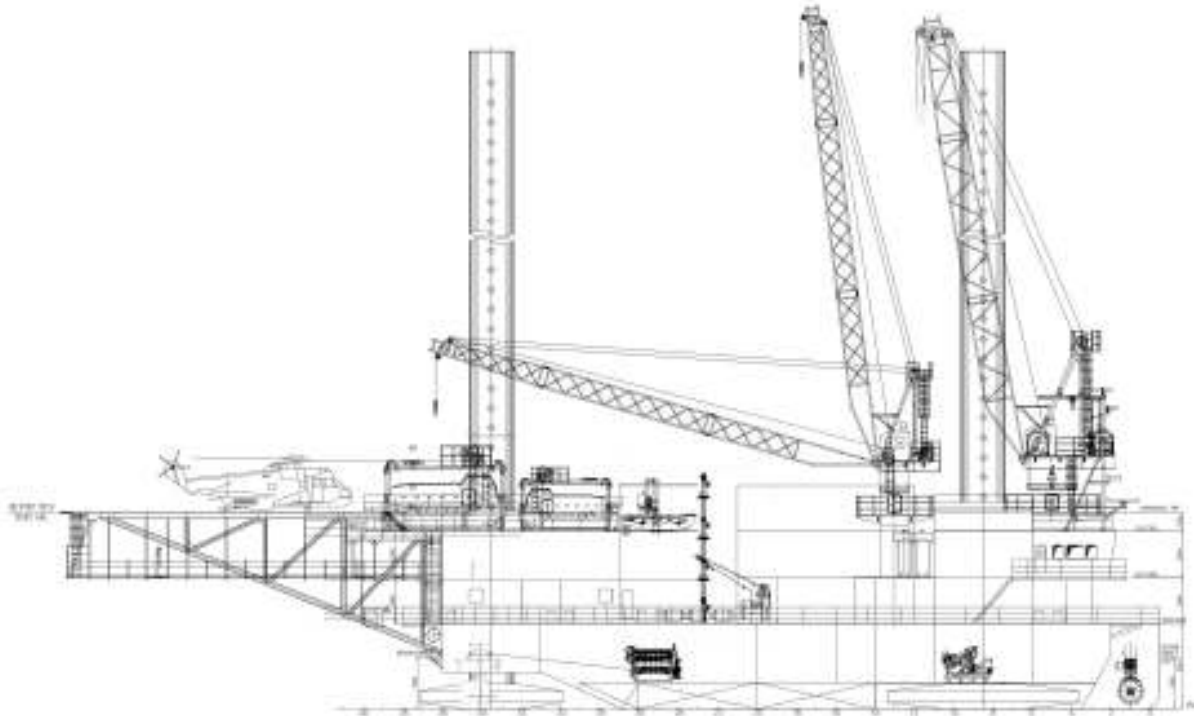
Environmental Criteria	Operation	Storm Survival
Max. Water Depth [m]	45	25
Max. Wave Height [m]	5	7
Wave Period [s]	9.6	9.6
Wind [1-minute averaged][m/s]	25.8	51.5
Surface current [m/s]	1.45	2.057
Design Temperature [°C]	0~40	0~40

Owners: Mediterranean Offshore Service Co. (MOSCO)

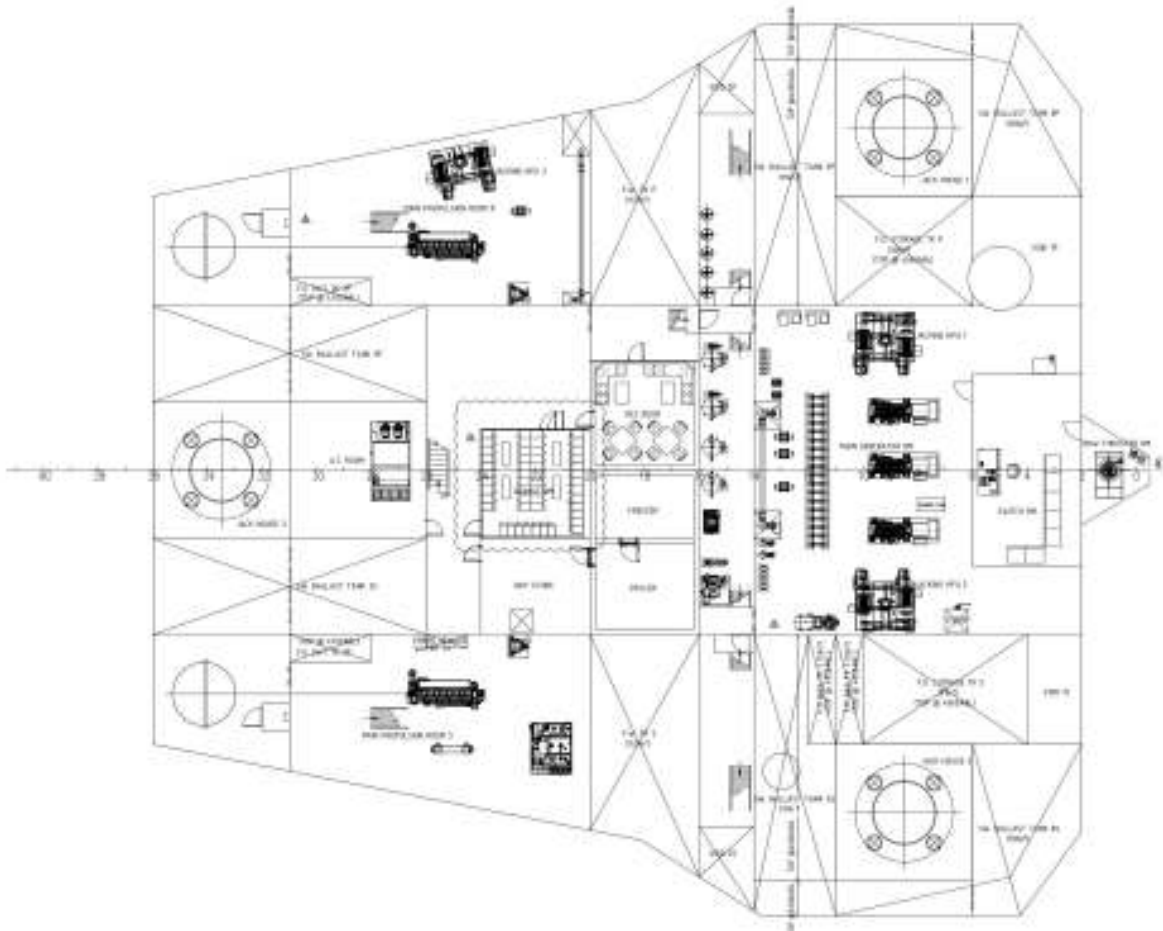
8 Palestine Street, Port Said 42111, Egypt.

Tel : +2066 322 8538 , Fax +2066 322 8830

General Arrangement



Outboard Profile



Machinery Deck

Owners: Mediterranean Offshore Service Co. (MOSCO)

8 Palestine Street, Port Said 42111, Egypt.

Tel : +2066 322 8538 , Fax +2066 322 8830